

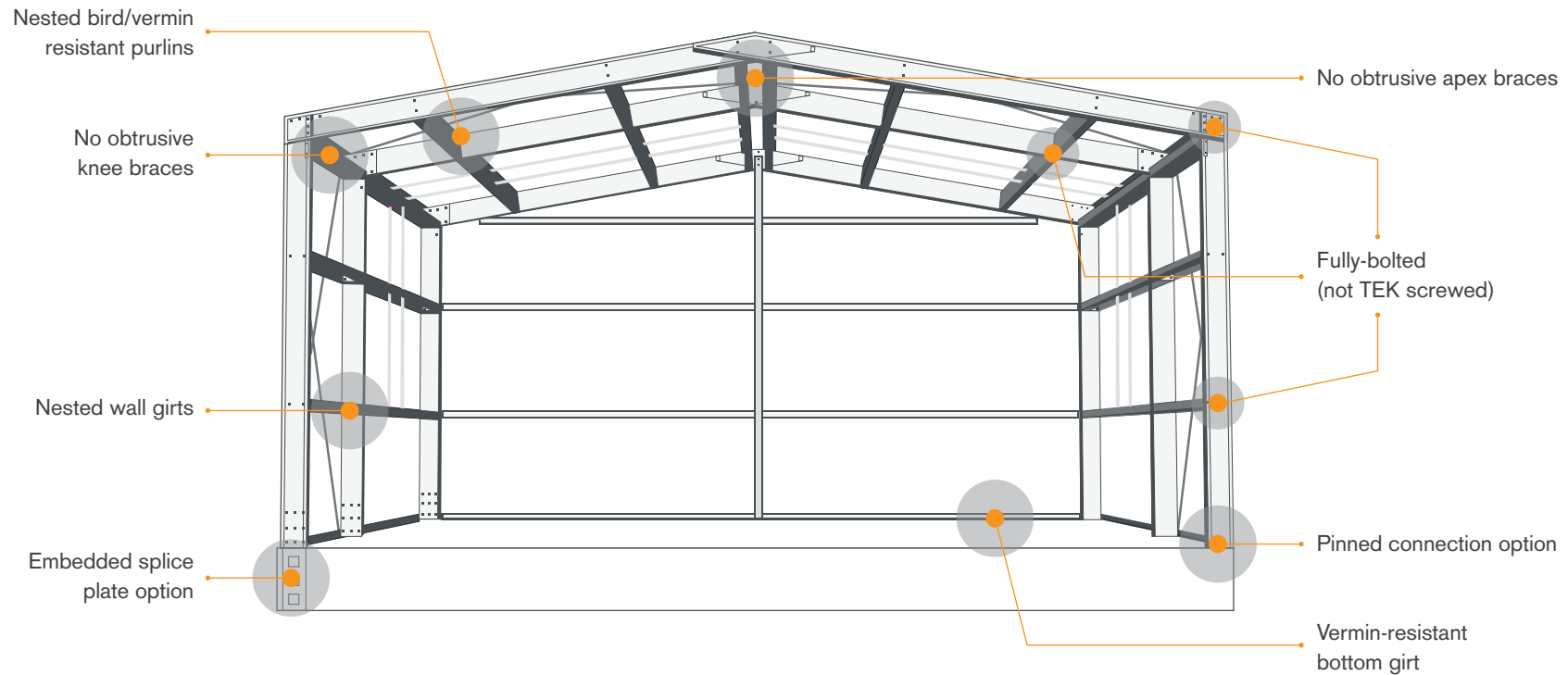
An aerial photograph of a large, modern industrial building with a light-colored, corrugated metal roof. The building is situated in a green field. In the background, there is a body of water, a small town, and a large mountain range under a bright, hazy sky at sunset. The sun is low on the horizon, casting a warm, golden glow over the entire scene. The text "EXPERTS IN COMMERCIAL & INDUSTRIAL BUILDING SOLUTIONS" is overlaid in large, white, bold, sans-serif capital letters on the left side of the image.

# EXPERTS IN COMMERCIAL & INDUSTRIAL BUILDING SOLUTIONS

© BETTER **STEEL** BUILDINGS ©

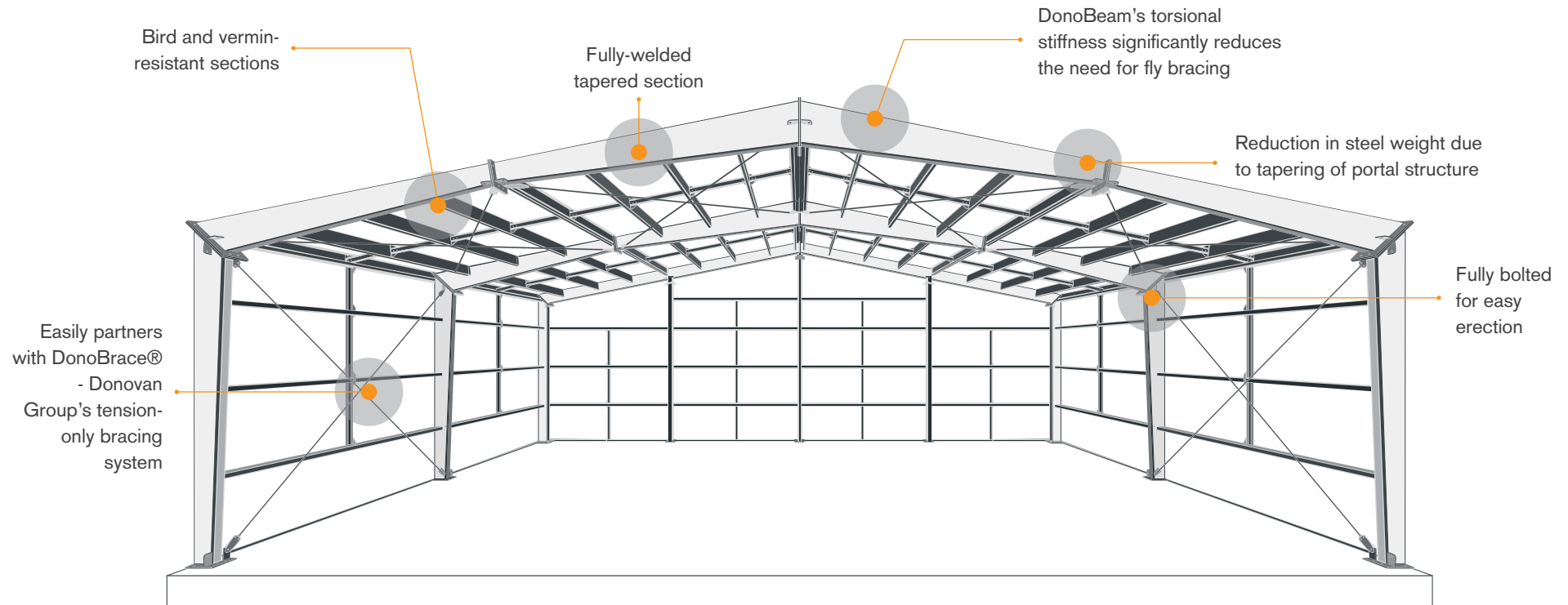


# Bracketless Portal System



Our unique, patented Bracketless Portal System is constructed using cold-formed flat Z450 galvanised coil. Typical clearspans range from 9m to 30m.

# DonoBeam



DonoBeam is tapered through its length, utilising only the amount of steel required, which reduces the weight/cost without affecting structural integrity.





## ITM, Taupo

LENGTH	30m
WIDTH	45m
KNEE HEIGHT	6m
FLOOR AREA	1350m <sup>2</sup>
PORTAL SYSTEM	Bracketless Portal System







# Roofing Industries, Christchurch

LENGTH	43.2m
WIDTH	26.9m
KNEE HEIGHT	8.6m
FLOOR AREA	1162m <sup>2</sup>
PORTAL SYSTEM	DonoBeam











## Hermpac Limited, Northland

LENGTH	130m
WIDTH	70m
KNEE HEIGHT	8m
FLOOR AREA	9420m <sup>2</sup>
PORTAL SYSTEM	DonoBeam







## Caulfield Signs, Rotorua

LENGTH	16.9m
WIDTH	24.3m
KNEE HEIGHT	4.6m
FLOOR AREA	411.8m <sup>2</sup>
PORTAL SYSTEM	Bracketless Portal System












# Kamo Vets, Whangarei

LENGTH	26m
WIDTH	16m
FLOOR AREA	410m <sup>2</sup>
PORTAL SYSTEM	Bracketless Portal System









## Marua Road, Auckland

LENGTH	70.5m
WIDTH	58m
KNEE HEIGHT	9m
FLOOR AREA	4100m <sup>2</sup>
PORTAL SYSTEM	DonoBeam









# Stihl Shop, Waikato

LENGTH	41.5m
WIDTH	17m
KNEE HEIGHT	3.9m
FLOOR AREA	705.5m <sup>2</sup>
PORTAL SYSTEM	Bracketless Portal System







# Saunders Motor Group, Thames

LENGTH	36.5m
WIDTH	20m
KNEE HEIGHT	6m
FLOOR AREA	730m <sup>2</sup>
PORTAL SYSTEM	Bracketless Portal System









# Prebble Seeds, Christchurch

LENGTH	66m
WIDTH	36m
KNEE HEIGHT	6m
FLOOR AREA	2376m <sup>2</sup>
PORTAL SYSTEM	DonoBeam











# AlSCO Depot, Porirua

LENGTH	69.2m
WIDTH	16m
KNEE HEIGHT	5.9m
FLOOR AREA	1200m <sup>2</sup>
PORTAL SYSTEM	Bracketless Portal System





ALSCO DEPOT, PORIRUA





## Mico Plumbing & Bathrooms, Invercargill

LENGTH	40.1m
WIDTH	27.9m
KNEE HEIGHT	5.9m - 7.7m
FLOOR AREA	880m <sup>2</sup>
PORTAL SYSTEM	Bracketless Portal System





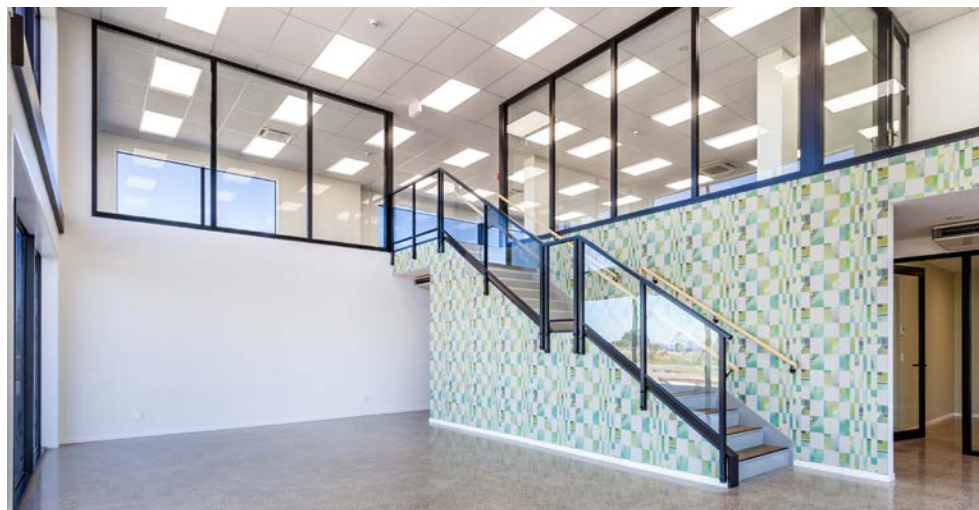


# SiteCare, Taupo

LENGTH	29m
WIDTH	21m
KNEE HEIGHT	6.7m
FLOOR AREA	776m <sup>2</sup>
PORTAL SYSTEM	Bracketless Portal System









# PlaceMakers, Whangarei

LENGTH	73m
WIDTH	29m
KNEE HEIGHT	7.6m
FLOOR AREA	2455m <sup>2</sup>
PORTAL SYSTEM	DonoBeam











## Deane Mark Auto Electrical, Waikato

LENGTH	28m
WIDTH	19m
KNEE HEIGHT	6.9m
FLOOR AREA	782m <sup>2</sup>
PORTAL SYSTEM	Bracketless Portal System







# Pritchard Building, Taupo

LENGTH	31m
WIDTH	31m
KNEE HEIGHT	5.3m
FLOOR AREA	961m <sup>2</sup>
PORTAL SYSTEM	Bracketless Portal System











## Brother International, Tauranga

LENGTH	92.3m
WIDTH	65m
KNEE HEIGHT	10m
FLOOR AREA	6625m <sup>2</sup>
PORTAL SYSTEM	DonoBeam

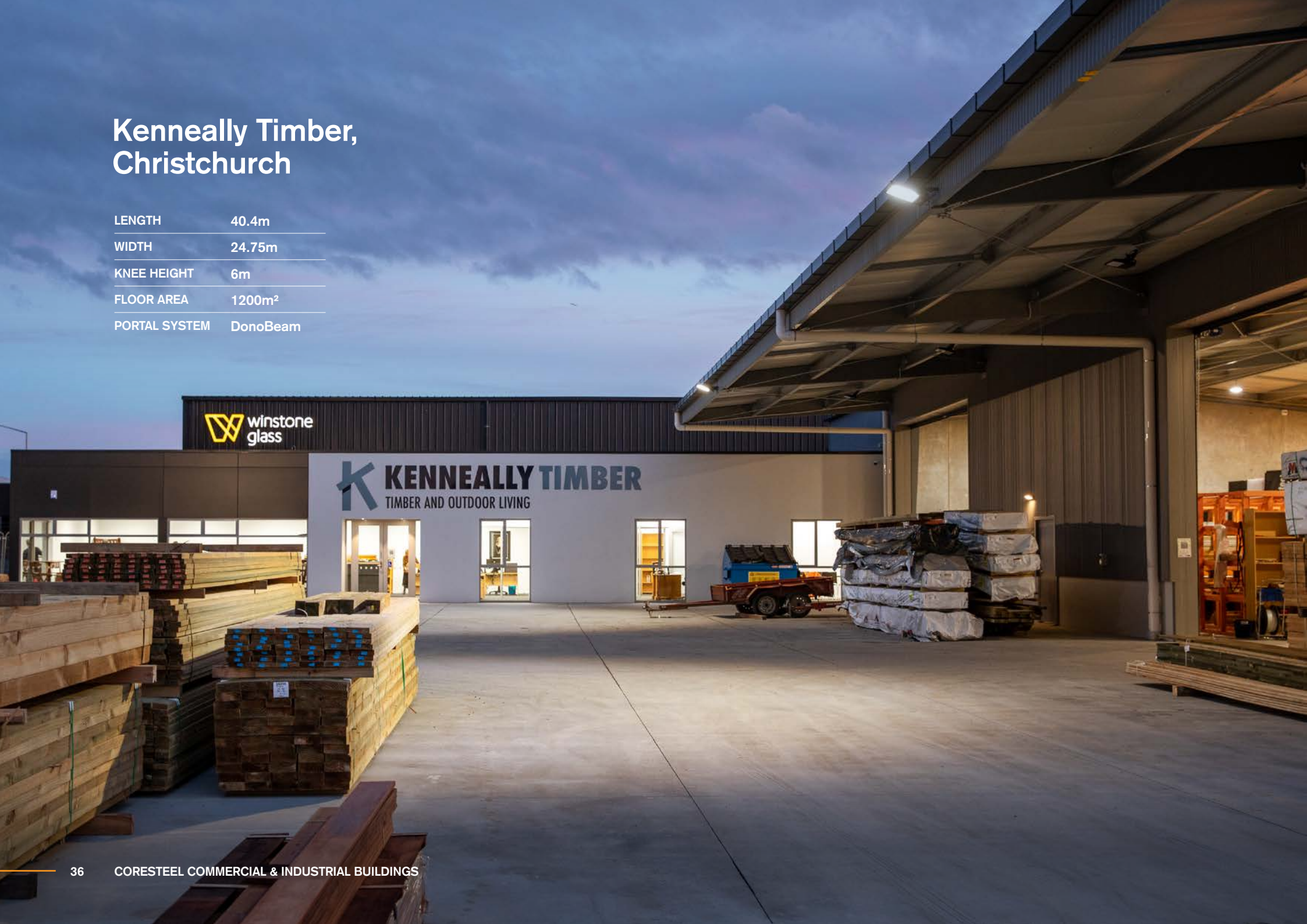






# Kenneally Timber, Christchurch

LENGTH	40.4m
WIDTH	24.75m
KNEE HEIGHT	6m
FLOOR AREA	1200m <sup>2</sup>
PORTAL SYSTEM	DonoBeam











## BizLine Office & Warehouse, Hamilton

LENGTH	48m
WIDTH	16m
KNEE HEIGHT	5.8m
FLOOR AREA	810m <sup>2</sup>
PORTAL SYSTEM	Bracketless Portal System









## Real Steel, Wellington

LENGTH	55.3m
WIDTH	32.7m
KNEE HEIGHT	10.1m
FLOOR AREA	1808.3m <sup>2</sup>
PORTAL SYSTEM	DonoBeam









## NZ Trucks, Hamilton

LENGTH	52m
WIDTH	29m
KNEE HEIGHT	6.5m
FLOOR AREA	1508m <sup>2</sup>
PORTAL SYSTEM	DonoBeam







# Apex Windows, Taupo

LENGTH	46m
WIDTH	28m
KNEE HEIGHT	5.5m
FLOOR AREA	1392.5m <sup>2</sup>
PORTAL SYSTEM	Bracketless Portal System









# Power Chill, Te Awamutu

LENGTH	40.5m
WIDTH	18m
KNEE HEIGHT	4.2m
FLOOR AREA	566.8m <sup>2</sup>
PORTAL SYSTEM	Bracketless Portal System









Learn more about our systems

**CORESTEEL.CO.NZ | 0800 CORESTEEL**



© BETTER **STEEL** BUILDINGS ©